

5.455
5.447
5.413
5.394
5.025
5.007
4.636
4.612
4.583
4.562
4.487
4.480
4.475
4.464
4.400
4.379
4.367
4.355
4.349
4.333
4.310
4.273
4.250
4.228
4.150
4.131
3.938
3.305
3.287
3.275
2.141
1.976
1.884
1.872
1.863
1.843
1.809
1.611
1.472
1.463
1.452
1.287
1.267
1.231
1.201
1.179
1.098
1.008
0.984
0.957
0.812
0.751
0.722



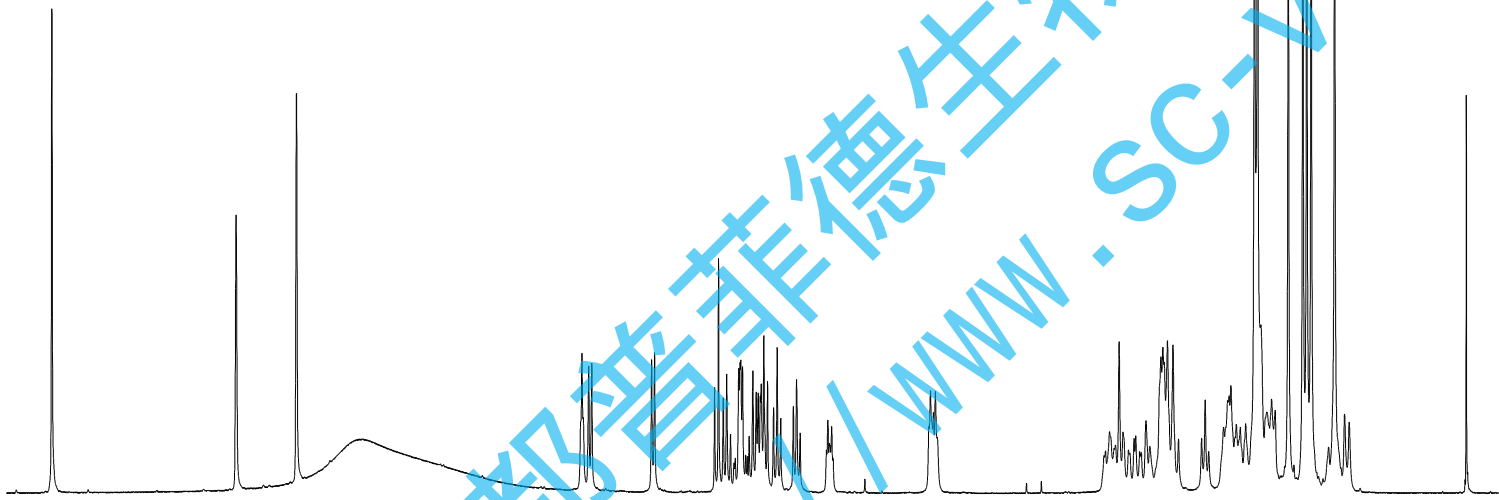
Current Data Parameters
NAME JiangZhuangSanQiZaoGan R1-1H NMR C5D5N
EXPNO 1
PROCNO 1

F2 - Acquisition Parameters

INSTRUM spect
PROBHD 5 mm PABBO BB/
PULPROG zg30
TD 65536
SOLVENT Pyr
NS 16
DS 2
SWH 8012.820 Hz
FIDRES 0.122266 Hz
AQ 4.0894465 sec
RG 63.67
DW 62.400 usec
DE 6.50 usec
TE 301.2 K
D1 1.00000000 sec
TDO 1

==== CHANNEL f1 =====
SF01 400.1324710 MHz
NUC1 1H
P1 14.79 usec
PLW1 11.50800037 W

F2 - Processing parameters
SI 65536
SF 400.1299928 MHz
WDW EM
SSB 0
LB 0.30 Hz
GB 0
PC 1.00
SR -7.16 Hz



8.5 8.0 7.5 7.0 6.5 6.0 5.5 5.0 4.5 4.0 3.5 3.0 2.5 2.0 1.5 1.0 0.5 ppm

1.11
1.12
1.09
1.00
1.06
2.03
3.13
1.09
1.11
1.01
2.00
5.17
5.18
1.14
4.32
7.02
4.30
3.33
9.23
4.21
1.08

BRUKER

Current Data Parameters
NAME JiangZhuangSanQiZaoGan R1-13C NMR C5D5N
EXPNO 1
PROCNO 1

F2 - Acquisition Parameters

INSTRUM spect
PROBHD 5 mm PABBO BB/
PULPROG zgig30
TD 65536
SOLVENT Pyr
NS 4096
DS 4
SWH 24038.461 Hz
FIDRES 0.366798 Hz
AQ 1.3631488 sec
RG 202.5
DW 20.800 usec
DE 6.50 usec
TE 301.2 K
D1 2.00000000 sec
D11 0.03000000 sec
TD0 1

=====
CHANNEL f1
SFO1 100.6228298 MHz
NUC1 13C
P1 10.13 usec
PLW1 51.00000000 W

=====
CHANNEL f2
SFO2 400.1316005 MHz
NUC2 1H
CPDPRG[2] waltz16
PCPD2 90.00 usec
PLW2 11.50800037 W
PLW12 0.31077999 W

F2 - Processing parameters
SI 262144
SF 100.6127448 MHz
WDW EM
SSB 0
LB 1.00 Hz
GB 0
PC 1.40 Hz
SR -24.20 Hz

